

Hydraulic - Unit Inquiry form



SCHMITTER
Hydraulik

Fax: +49 9732 88881700

email: aggregate@schmitter-hydraulik.de

Serial number:

		/					
--	--	---	--	--	--	--	--

Firm / Customer

Street

Postalcode

City

Contact Customer

Phone

E-Mail

Sales Representativ (Schmitter Hydraulik)

Project Manager (Schmitter Hydraulik)

You can find this Inquiry form at

www.schmitter-hydraulik.de

in the Download-area under Forms.

Please fill out this form complete,
thoroughly and legibly, to ensure a
quick and easy processing of your request.

Please send your Inquiry form

by **Fax an +49 9732 8888 1700** or

by e-mail to **aggregate@schmitter-hydraulik.de**

In order to offer you a hydraulic unit that exactly meets your requirements, we need this information as accurate as possible. Please enclose all information you have with this request, for example: kind of application, dimensions, pictures or a hydraulic circuit diagram.

Below are some hints how to fill out this form:

to 1: Describe the location where the Unit will be placed. Indoor use or outdoor? Stationary or mobil.

to 5: Describe the application for which the Unit will be used.

to 9: Choose the kind of pressure regulation, if needed

to 10: Select the type of filtration and specify the desired filter fineness (10µm, 25µm, 40µm...)

to 11: Please describe here, which type of control is desired. For example Cetop valves or Monobloc design, electrically or manually operated

to 13: Select the accessories if needed.
Radio remote controls must be configured separately

General Information

1	Location	<input type="checkbox"/> Indoor use <input type="checkbox"/> Outdoor use	
		<input type="checkbox"/> stationary <input type="checkbox"/> mobile	
		<input type="checkbox"/> others:	
2	Operating time	<input type="checkbox"/> Continius operation without stoppage <input type="checkbox"/> Occasional use	
		<input type="checkbox"/> Continius operation with stoppage of _____min	
3	Operation pressure [bar]		4 Delivery volume [l/min]
5	Description of the application		

Technical Information

6	Motor	1P 230V AC:	<input type="checkbox"/> 0,75kW	<input type="checkbox"/> 1,1kW	<input type="checkbox"/> 1,5kW	
			<input type="checkbox"/> 2,2kW			
		3P 400V AC:	<input type="checkbox"/> 0,37kW	<input type="checkbox"/> 0,75kW	<input type="checkbox"/> 1,1kW	
		<input type="checkbox"/> 1,5kW	<input type="checkbox"/> 2,2kW	<input type="checkbox"/> 3,0kW	<input type="checkbox"/> 4,0kW	
		<input type="checkbox"/> 5,5kW	<input type="checkbox"/> 7,5kW	<input type="checkbox"/> 11,0kW	<input type="checkbox"/> 15,0kW	
		<input type="checkbox"/> 18,5kW	<input type="checkbox"/> 22,0kW			
7	Arragement	<input type="checkbox"/> vertical in the Tank <input type="checkbox"/> horizontal on Top of the Tank				
8	Tank	<input type="checkbox"/> Alu 10l	<input type="checkbox"/> Alu 16l	<input type="checkbox"/> Alu 25l	<input type="checkbox"/> Others:	
		<input type="checkbox"/> Steel 30l	<input type="checkbox"/> Steel 55l	<input type="checkbox"/> Steel 75l		
		optical level indicator with thermometer				<input type="checkbox"/> yes
		electrical level indicator with temperature monitoring				<input type="checkbox"/> yes
		cleaning opening (only with steel tanks possible)				<input type="checkbox"/> yes
9	Pressure regulation					
10	Filtration	<input type="checkbox"/> suction filter <input type="checkbox"/> pressure filter <input type="checkbox"/> Return flow filter				

Controls

11	Type of Control	
12	Control voltage	<input type="checkbox"/> 12V DC <input type="checkbox"/> 24V DC <input type="checkbox"/> 230V AC

Accessories

13	Accessories	<input type="checkbox"/> Oil pan <input type="checkbox"/> Oil cooler
		<input type="checkbox"/> Remote control:

Please croos the appropriate choice and describe the requirements as accurate as possible, to avoid any discrepancis that may occure in advance. If you have images, hydraulic schematics or sketsches, please include them also to this inquiry. Our special hydraulic units have, after receipt of order, a delivery time of min. 4-6 weeks depending on the order situation. The unit is delivered assembled and tested. Without oil filling. Electrical connections must be made by the customer.

Standard hole pattern

Please select the desired hole pattern for the arrangement of the components on the tank lid.

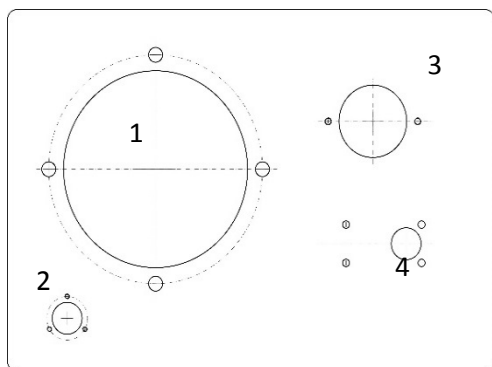
General:

This are sketches to illustrate our standard hole pattern. Each pattern has the necessary holes for the motor, filler neck and returnfilter. Measuerments will be adjusted individually for the individual sizes.

They differ only in the assembly of the various controls.

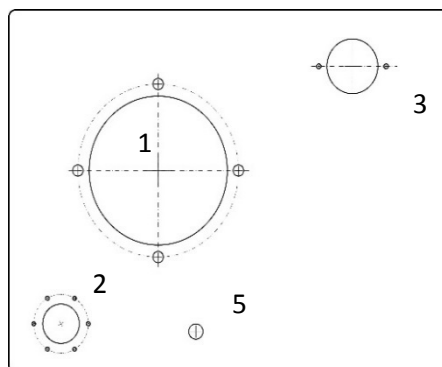
Please contact us, if you need a special hole pattern and we will check the feasibility

☐ Pattern 1:



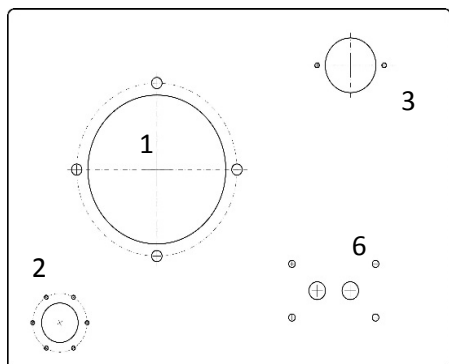
Pattern 1 has a mounted base plate with integrated pressure relief valve. This design is mainly suitable for units up to 25l tank volume.

☐ Pattern 2:



Pattern 2 offers the possibility of mounting either a monobloc valve or a compact connection plate for cetop valves in the free area

☐ Pattern 3:



In Pattern 3, the valve plate for Cetop valves is mounted vertically.

- 1. Motor
- 2. Filler neck
- 3. Return filter
- 4. Base plate with pressure relief
- 5. Pressure connection
- 6. Cetop-connection plate